



SageRecorder™ Installation & User Manual

Version 1.4

Table of Contents

Introduction	3
Minimum System Requirements	3
Product Overview	3
Installation	4
SageRecorder Quick Start	5
Using SageRecorder	6
Watching TV	7
Recording TV	7
Record Schedule	8
SageRecorder Setup	9
Multimedia Settings.....	9
Video Settings.....	10
Audio Settings	11
Sources Settings.....	12
Troubleshooting Guide	14
Questions about Setup & Installation.....	14
Questions about Watching Live TV	14
Questions about Recording.....	15

Introduction

Thank you for purchasing or downloading the trial version of SageRecorder™ from Frey Technologies, LLC. We hope you enjoy SageRecorder and all its functionality. If you need any help during installation and setup please utilize this manual and troubleshooting guide or our online discussion forum. If your questions still remain unanswered, please submit a Support Request at www.sage.tv/request.html and we will respond within 72 hours.

Minimum System Requirements

- Windows 98SE or later operating system
- Recommended minimum 256Mb RAM
- Genuine Intel Pentium III 600 MHz or AMD Athlon 600 MHz or faster
- Installed compatible TV tuner/MPEG-2 encoding card or USB device (a list of compatible cards is available at www.sage.tv/requirements.html)
- PCI/AGP bus graphics card with overlay
- MPEG-2 Software Decoder (bundled with the compatible TV tuner cards)
- DirectX v8.0 or higher available from www.microsoft.com/windows/directx/
- Java Runtime Environment v1.4.0 or higher available from java.sun.com/getjava
- Analog/Digital Cable, Satellite or Broadcast TV for recording television
- Recommended minimum 20 GB Free disk space for video storage, i.e. Great Quality Setting takes about 2 GB per hour of video stored

Product Overview

SageRecorder is a computer software application for your PC that interacts with a TV tuner card allowing you to receive television programming through your PC. With SageRecorder you can pause live TV, rewind and fast-forward, and record your favorite shows.

Installation

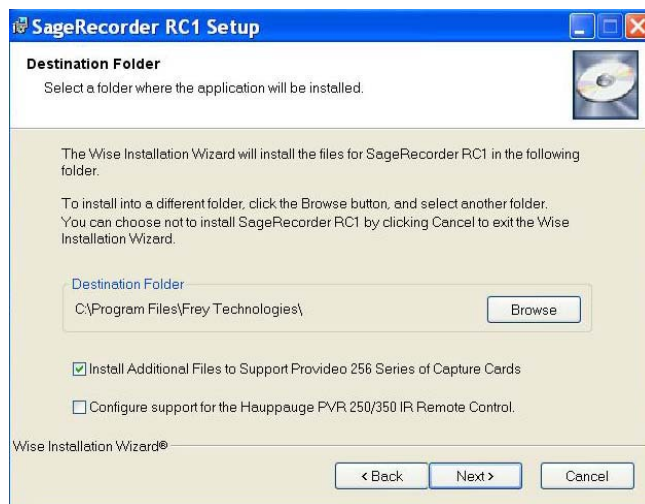
This manual assumes that the SageRecorder compatible TV tuner/MPEG-2 encoding card or device has been installed and is functioning properly. If not, please follow the installation instructions that shipped with your card prior to installing SageRecorder. We recommend installing all of the software applications that came with your card for testing purposes.

To install SageRecorder, run the executable (.EXE) file you downloaded after purchasing SageRecorder to install SageRecorder on your computer. During installation you will need to specify the following installation options:

Install Options:

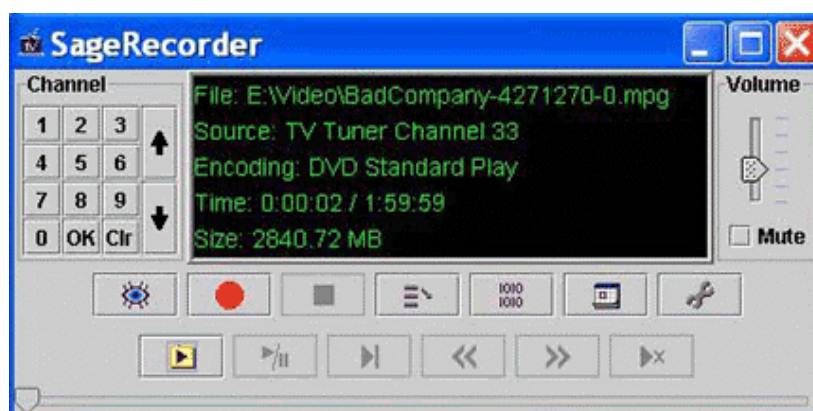
If you will be using a Provideo 256 Series card, choose to install the additional files here.


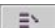

If you plan on using the Hauppauge PVR-250, PVR-350 or USB PVR2 remote control to control SageRecorder, tell SageRecorder to configure support for those remotes here. Details on the configured buttons are available on our website at www.sage.tv/support.html.



If Java Runtime Environment v1.4 or later is not installed, the installer will install automatically. Once installation is complete, launch the SageRecorder application and input your name and license key. After inputting your license key SageRecorder will launch automatically.










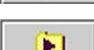



SageRecorder Quick Start



When SageRecorder is run for the first time it will automatically recognize the installed TV tuner/MPEG-2 Encoding card on your PC. You should see video through the SageRecorder Video window right away. If the Preview window is not visible, hit the Live Preview button,  to launch it. If video is not immediately visible, press the Select Source button,  to switch between RF, Composite and S-video inputs. You should now see video and have full timeshifting functionality at your fingertips. If you want to play back a previously recorded video or audio file, select it through the file open window . If you installed the Hauppauge remote configurations at installation, you can also begin using the remote control for playback and timeshifting.

Using SageRecorder

Here's a breakdown of each control panel button:

-  - Preview – launches the SageRecorder Video window (Ctrl + W)
-  - Record – records the current channel or the video you are watching (Ctrl + R)
-  - Stop – stops recording the current video (Ctrl + S)
-  - Source – changes the video source from RF, S-video or Composite (right-click for options)
-  - Encoding – changes the Video Encoding or Recording Quality setting (right-click for options)
-  - Scheduler – shortcut to SageRecorder Scheduler
-  - Setup – launches the setup options window (Alt + F7)
-  - File Open – to select any file for playback (Ctrl + O)
-  - Play/Pause – toggle for Play/Pause functionality (Ctrl + Space)
-  - Frame Step – steps through video frame by frame (Ctrl + N)
-  - Skip Forward – skips forward in 10 second increments (Ctrl + Left)
-  - Skip Back – skips back in 10 second increments (Ctrl + Right)
-  - Play Rate – press once to play video at 2:1 rate, twice for ½:1 rate, third time to return to normal play rate (Ctrl + P)

You can also use the slider bar located at the bottom of the control panel to quickly jump around within recorded video during playback. During full screen playback in SageRecorder, you can still use the keyboard commands shown above or the preconfigured remote control commands for the Hauppauge supported remotes.

Watching TV

To watch TV through SageRecorder you must first open the Video window and then enter the channel to view. This allows you to watch any channel immediately. However, if you wish to perform timeshifting functionality, you must press Record to begin recording the current video stream. Now you have full timeshifting capability to Pause, Skip Forward or Back and change the Play Rate. You can also change channels and the video will continue to record until you stop the current recording.

The SageRecorder Video window can be resized by dragging the corners or you can quickly change the size with a “right-click” of the mouse and choosing from the following options:

- Unzoom (Ctrl + O)
- Zoom x ¼ (Ctrl + 1)
- Zoom x ½ (Ctrl + 2)
- Zoom x 2 (Ctrl + 3)
- Full Screen (Ctrl + F)

Once you stop the current recording, you will be prompted to either Save the file or just cancel if you don't want to save what was being recorded. You can then access the recorded file by using the File Open button.

Recording TV



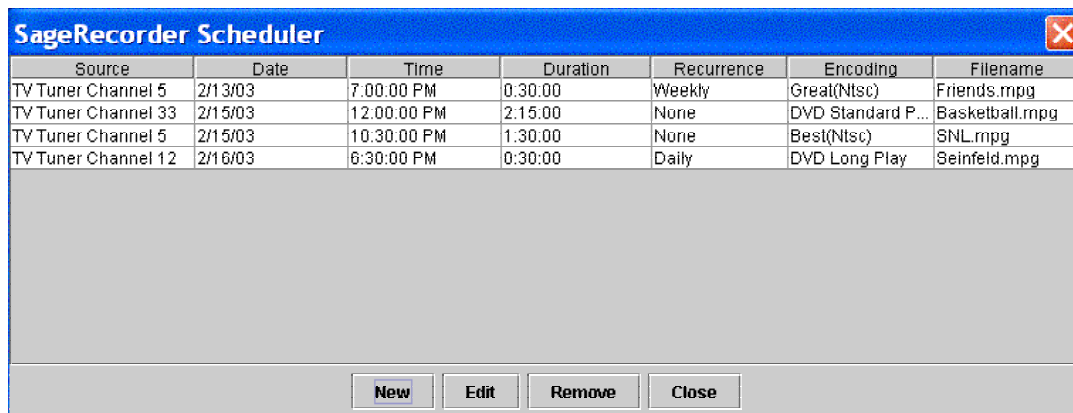
There are a number of options for recording through SageRecorder:

- Record Now – records the current video stream (Ctrl + R)
- Record Schedule – opens the SageRecorder Scheduler to view scheduled recordings
- Select File – select a file name to save as once recording is stopped
- Record for Time – enter duration to record in HH:MM:SS format
- Record for Size – enter file size to record in megabytes (MB)
- Record Until Stopped – record current video stream until stopped

These options are accessible by “right-clicking” on the Record button. If you try to close SageRecorder by clicking the “X” and recordings are pending, SageRecorder will be minimized to your System Tray. This will also release the tuner/capture device for use by another application if necessary.

Record Schedule

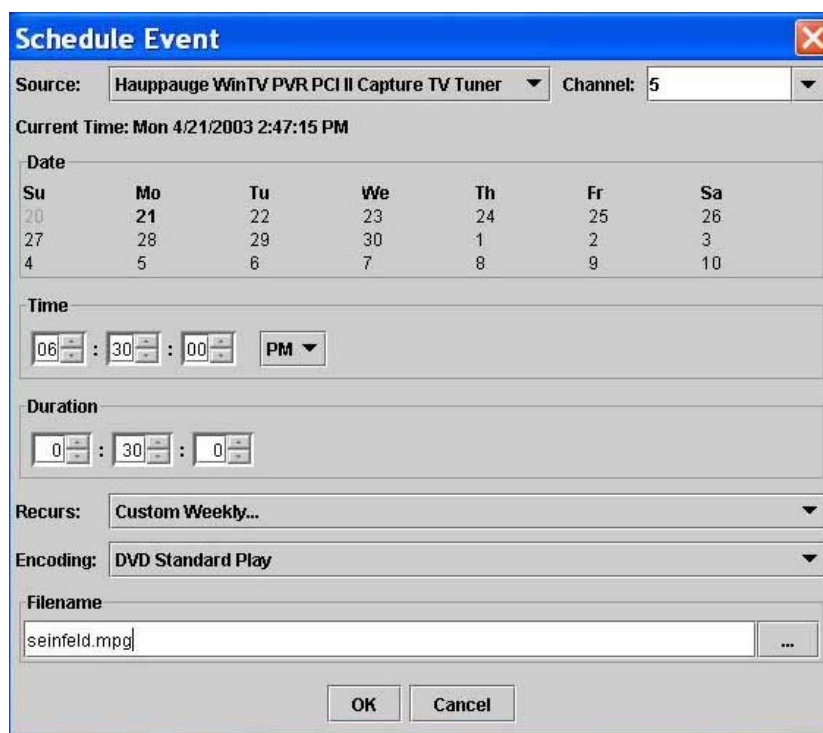
SageRecorder includes a Scheduler to perform individual or recurring recordings. When you select "Record Schedule" you will be brought to the following screen:



Source	Date	Time	Duration	Recurrence	Encoding	Filename
TV Tuner Channel 5	2/13/03	7:00:00 PM	0:30:00	Weekly	Great(Ntsc)	Friends.mpg
TV Tuner Channel 33	2/15/03	12:00:00 PM	2:15:00	None	DVD Standard P...	Basketball.mpg
TV Tuner Channel 5	2/15/03	10:30:00 PM	1:30:00	None	Best(Ntsc)	SNL.mpg
TV Tuner Channel 12	2/16/03	6:30:00 PM	0:30:00	Daily	DVD Long Play	Seinfeld.mpg

Buttons: New, Edit, Remove, Close

The SageRecorder Scheduler shows you all upcoming scheduled recordings. To enter new recordings select "New" on the screen above and the following screen will appear:



Schedule Event

Source: Hauppauge WinTV PVR PCI II Capture TV Tuner Channel: 5

Current Time: Mon 4/21/2003 2:47:15 PM

Date

Su	Mo	Tu	We	Th	Fr	Sa
20	21	22	23	24	25	26
27	28	29	30	1	2	3
4	5	6	7	8	9	10

Time

06 : 30 : 00 PM

Duration

0 : 30 : 0

Recurs: Custom Weekly...


Encoding: DVD Standard Play

Filename: seinfeld.mpg

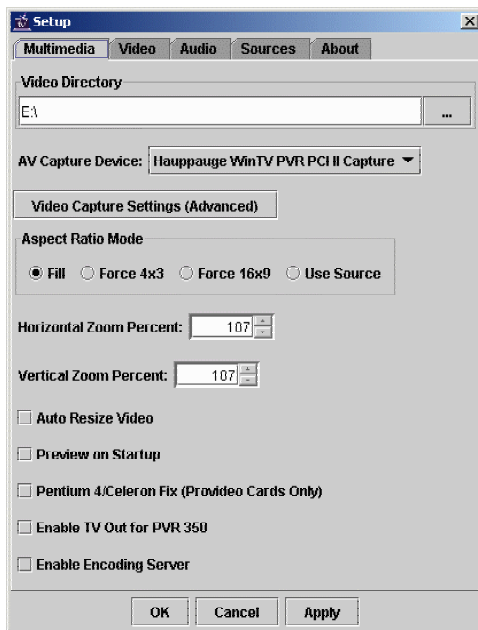
Buttons: OK, Cancel

The Schedule Event screen allows you to schedule individual or recurring recordings for the future. Tell SageRecorder the source, channel and date for the recording. Then specify the Time the recording should begin and the Duration of the recording. Now specify whether this recording should recur daily, weekly, custom weekly (select days to record), monthly or just schedule this recording once as specified. If you select to recur this recording, the same Time and Duration will be used. Specify the Encoding (Recording Quality) to be used and give this recording a file name. If you have chosen this to be a recurring recording then the same file name will be used but a numbering sequence will be used after the file name every time a recording is performed. Hit OK and you will see this recording appear in the SageRecorder Scheduler.

SageRecorder Setup

SageRecorder has a robust selection of setup options and can be accessed by hitting the  button on the Control Panel. You can now set your Multimedia, Video, Audio and Sources settings.

Multimedia Settings



Video Directory:

By default SageRecorder adds a folder within the SageRecorder directory for Video storage. Here you can change that directory to any folder on your hard drive or a mapped drive on a home network. UNC pathnames are also supported (i.e. [\\COMPUTER\ShareName\Folder](#))

AV Capture Device and Setting:

Select your AV Capture device from the drop down menu. If you are using multiple tuners, select the default device you are using for this instance of SageRecorder. If you would like to adjust the settings of the card through the manufacturer's software, select Video Capture Settings (Advanced).

Aspect Ratio Mode:

Here you can select the aspect ratio mode for Video playback. You can choose to Fill the screen, Force 4x3, Force 16x9 or Use Source. The default setting is to fill the screen.

Zoom Effects:

You have the ability to adjust the percentage at which the video is zoomed during playback. The default setting is 107 because it allows for overscan to the television set so you have no black borders on the video during playback. You can modify these settings to "Stretch" a particular program during playback. This is especially useful when used with the Aspect Ratio settings to remove "Window Boxing".

Auto Resize Video:

Select this option to playback video files at their original size.

Preview on Startup:

Select this option for the SageRecorder Video window to launch upon startup.

Pentium 4/Celeron Fix:

Only used with Provideo series cards: Implements a fix for bugs caused by the Provideo cards in conjunction with the Pentium 4 or Celeron processor. **Any change to this setting requires an application restart to take effect.**

Enable TV Out for PVR 350

Select if you are using the TV Out functionality of the PVR-350 card. To initialize you must first run the WinTV 2000 Application and then shutdown the WinTV 2000 application before launching SageRecorder. The new Hauppauge drivers for the PVR-350 should alleviate this extra initialization step.

Enable Encoding Server:

Select if you are using SageRecorder to enable a remote encoder across a network in conjunction with SageTV.

Video Settings



Video settings allow you to specify the filters used to playback a video stream. **Any changes to these settings require restarting the current recording or disabling/enabling the live preview.**

Rendering Filter:

Rendering Filter is the filter used to render the video. Use the Default setting unless you are experiencing problems; then choose the Overlay setting.

Video Decoder:

Select the [Video Decoder](#) that you would like SageRecorder to use when decoding MPEG-2 video. These options are related to the MPEG-2 decoders that are installed on your PC. They are commonly installed with video cards, DVD players or TV tuner/Capture cards.

If you are using the Xcard as your video decoder select it from the list and set the Rendering Filter to default. Also confirm that the Audio Decoder and Renderer are set to default as well.

DirectX Video Acceleration:

Here you can modify the MPEG settings as they relate to Video Acceleration. Choose a MPEG mode and then specify whether or not you want to use a specific Deinterlacing mode. Leave this setting at default unless you are experiencing problems with Video Acceleration.

Dscaler Deinterlacer:

If you want to use Dscaler to Deinterlace the video, select this option here. You can only select this option when selecting the Elecard Video Decoder filter (not included with the SageRecorder installation but freely available at www.elecard.com/). Then select your Deinterlacing mode and whether or not you want to use Double Refresh Rate or Odd Field First. You may experience audio & video synchronization problems if you have “Double Refresh Rate” enabled on a PC that doesn't have enough CPU power. More information can be obtained about Dscaler and Deinterlacing at www.dscaler.com/.

Audio Settings

Any changes made to the Audio Decoder or Audio Renderer settings require restarting the current recording or disabling/enabling the live preview.

Mute Audio on Fast/Slow Play:

Mutes the sound during Fast and Slow play rates during video playback.

Samples per Second:

Adjusts the Audio sampling rate for recording audio.

Bitrate (kbps):

Adjusts the Audio Bitrate used by the MPEG audio encoder.

Audio Patch Input:

Used for the Provideo Series cards only. Tells SageRecorder what input on the sound card the live audio signal is connected to from the TV tuner/Capture card.

Audio Decoder:

Select the MPEG Audio Decoder you would like to use for playback.

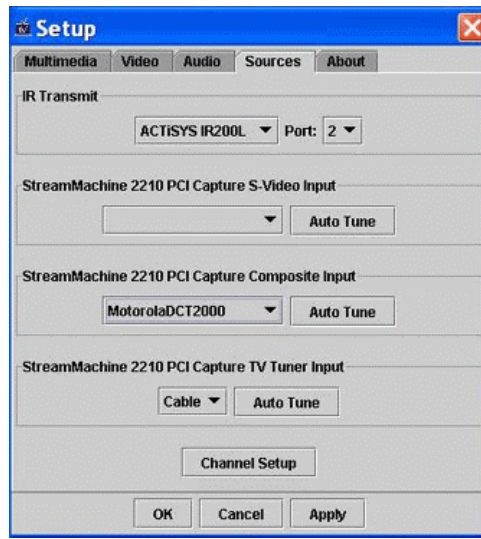
Audio Renderer:

Select the Audio Renderer you would like to use for playback.

Audio Playback Delay (msec):

Adjusts the Audio Playback Delay if you are experiencing a delay during playback during audio and video.

Sources Settings



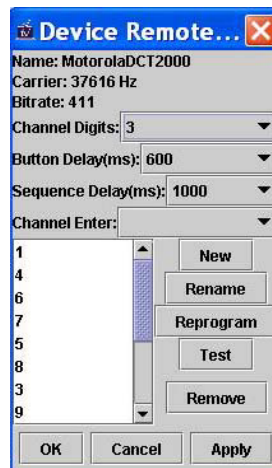
IR Transmit:

Select the device name and COM port if you are using an IR Transmitter to send commands to your cable or satellite set-top box.

S-Video or Composite:

Specify if you are using Composite or S-Video as your video source. Select from the drop down the device you are using or select add/edit to program a new device or edit an existing one. A device is your cable box or satellite receiver that is connected to your capture card. If your device is not listed, choose “Add a Device” and follow the directions to program the IR transmitter for control of that device. After you add a device, you should add the 0-9 remote codes to it. These will be used to change the channels on your set-top box or receiver. You may also need to program an “Enter” or similar button, as mentioned in the following section.

If you choose to Edit a current device, you have the following options:



You can now modify the following:

- Channel Digits – maximum number of digits for input for your device (i.e. if the highest channel you have is 999, then it's 3 digits)
- Button Delay – time delay (in milliseconds) between individual IR signals that are sent by SageRecorder to your set-top receiver (i.e. when SageRecorder is changing the receiver channel to "12", this is the delay between sending the "1" and the "2")
- Sequence Delay – time delay between channel changes (i.e. SageRecorder just finished changing your receiver channel to 12, this is the delay before SageRecorder may change the channel again)
- Channel Enter – if you are required to press an 'Enter' button after entering the channel digits for the device to accept the command, create a remote code for that button using 'New' and then select that remote code here
- New – press to enter a new remote code for programming
- Rename – press to rename a remote code
- Reprogram – press to reprogram a remote code for your set-top box or receiver
- Test – press to test a remote code by sending it to your set-top box or receiver
- Remove – press to remove a remote code

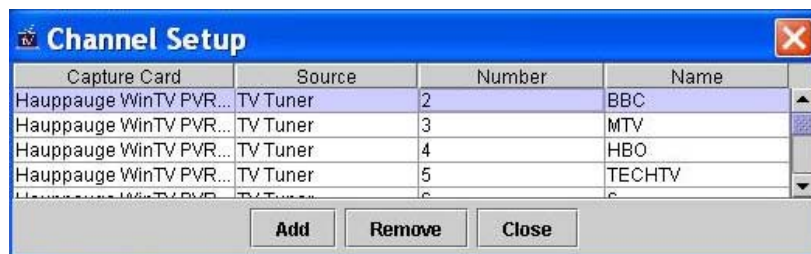
Once the settings are changed, click Apply, and then OK to save any changes.

TV Tuner Input:

Specify what type of RF connection if you are using this input as your video source. Then click "Auto Tune" to tune the available channels.

Channel Setup:

Click to change the names of available channels as shown below:



Troubleshooting Guide

This Troubleshooting Guide should be your first reference for any questions or problems you are having with SageRecorder. As new troubleshooting items are added, they will be available online at www.sage.tv/troubleshooting.html. For additional support, you can post your questions in our discussion forum at www.sage.tv/forums/. If your question still remains unanswered, submit a support request at www.sage.tv/request.html and we will reply within 72 hours.

Questions about Setup & Installation

SageRecorder is having problems controlling my cable box.

For SageRecorder to control your cable box you must use a third party IR transmitter like the Actisys IR-200L available through Frey's website. You can setup & configure the IR-200L through the Setup > Sources.

I have the IR-200L configured properly but it's missing some of my channel changes.

The IR-200L needs to be positioned so that your cable box can receive the Infrared commands that are sent by the transmitter. Look to see where the Infrared receiver is on your cable box and position the IR-200L so that it's sending the commands to that Infrared receiver within the cable box. You may have to try a few different positions to get the best results.

SageRecorder is having problems controlling my satellite receiver.

For SageRecorder to control your satellite receiver you must either use the Actisys IR-200L as explained above for cable box control or a serial cable. If you are using a serial cable to control your satellite receiver, please consult the 3rd party support section of our website at www.sage.tv/3rdparty.html.

Questions about Watching Live TV

I'm not getting any video through SageRecorder.

First check all your video connections to and from the PC. Also check to make sure you have the correct connection/source selected in SageRecorder. Then launch the application that came with your TV tuner/Capture card and see if you get any video there. If not follow the troubleshooting instructions from the manufacturer. If you see video through the installed application, try using a different Video Decoder for SageRecorder. The Video Decoder settings are accessible in Setup under the Video tab. You can also check the discussion forum for other discussions related to your setup or create a new post.

I'm not getting any audio through SageRecorder.

First check all your audio connections to and from the PC. Then launch the application that came with your TV tuner/Capture card and see if you hear any audio there. If not follow the troubleshooting instructions from the manufacturer. If you hear audio through the installed application, try using a different Audio Decoder for SageRecorder. The Audio settings are accessible in Setup under the Audio tab. You can also check the discussion forum for other discussions related to your setup or create a new post.

The audio and video are out of sync during playback.

Try changing channels or restarting SageRecorder. If that doesn't work, shut down SageRecorder and reboot your computer. If you are still having problems on a regular basis, you can modify the Audio Playback Delay in Setup.


I'm getting audio and video but the video is of poor quality, stuttering, hesitating, etc.

Try another video renderer or video decoder in Setup > Video. You must restart SageRecorder for these settings changes to take effect.

Questions about Recording***Can SageRecorder record while my PC is not on?***

For SageRecorder to record programs your PC must be on and the SageRecorder application must be running.

Can I watch a program while it is being recorded?

Yes, you can watch a program as it is being recorded. Just launch the SageRecorder Video window by pressing the  button.

Can I watch a different program while one is being recorded?

No, SageRecorder is not capable of recording one show while watching another. However, if you are running multiple tuners you can run separate instances of SageRecorder to perform two recordings at one time.